

KYOCERA CLUSTER PRINTING

ENHANCE EFFICIENCY AND PRODUCTIVITY WITH HIGH SPEED PRINTING,
WITHOUT THE HIGH INVESTMENT COST

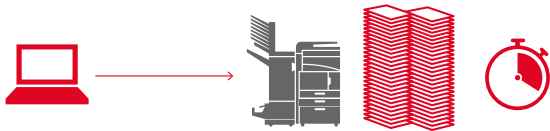
WHAT IS KYOCERA CLUSTER PRINTING

KYOCERA Cluster Printing (KCP) is a solution that allows customers who occasionally or seasonally need faster printing to speed up printing in their environment without having to make large investments, such as purchasing new high-speed machines. In other words, we can improve the customer's operational efficiency with a small investment.

BEFORE

When there is a
high volume print

Printing is completed
in about 20 min.

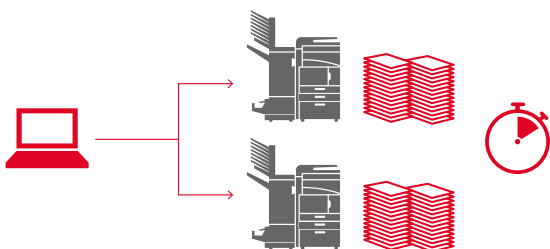


AFTER WITH CLUSTER PRINTING INSTALLED

Print with multiple MFPs and printers at once. Split the print jobs, and you can get your print job done faster.

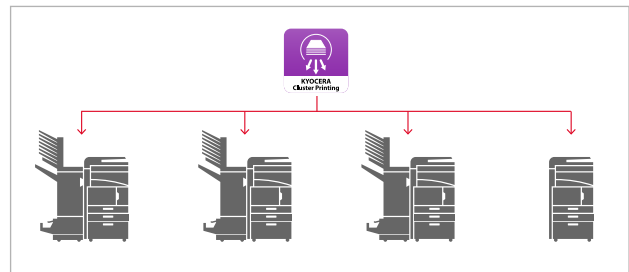
When there is a
high volume print

Printing is completed
in about 10 min.



FEATURES

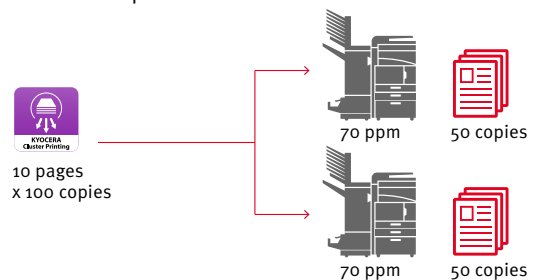
1. DISTRIBUTE A PRINT JOB BETWEEN UP TO FOUR DEVICES
You can even select different models



2. SPLIT PRINT JOB BASED ON PRINTING TASK

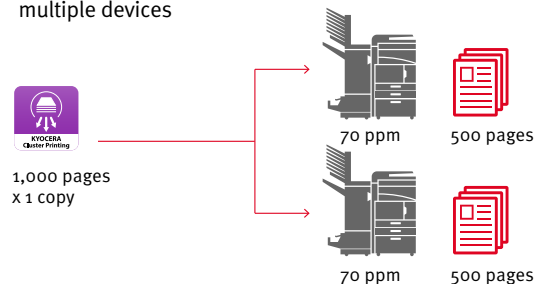
> Copy Splitting

Print multiple copies by splitting the same job across multiple devices.

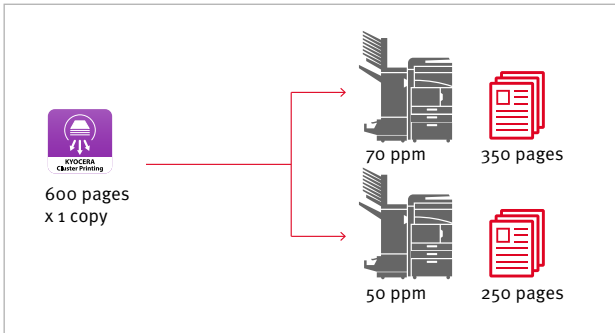


> Page Splitting

Print a single copy by splitting one job across multiple devices

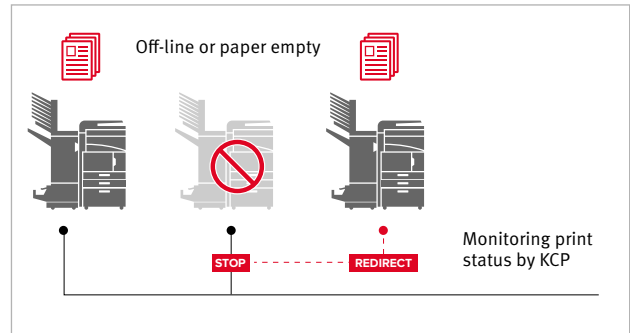


3. SPLIT PRINT JOB BASED ON DEVICE PPM

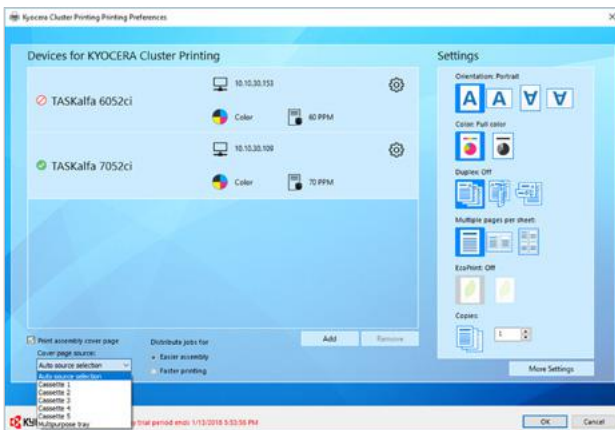


5. ERROR RECOVERY

Reprint, Manual/Auto redirect to other devices, Cancel



4. EASY TO OPERATE, SIMILAR TO A PRINTER DRIVER

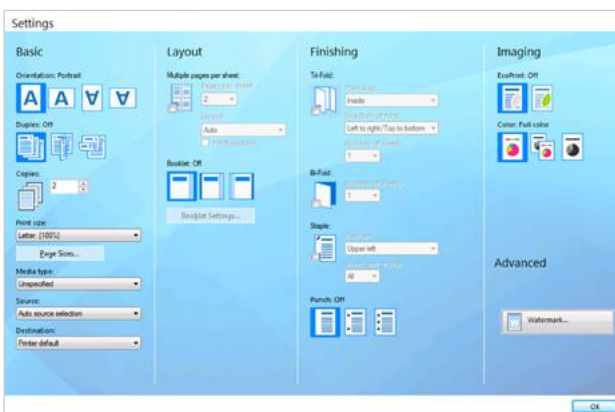


6. COVER PAGE TO HELP YOU COLLATE THE BATCHES

You can even use colored paper as a cover page



KCP-Window



KCP-Setting

USE CASES CLUSTER PRINTING

CHALLENGE 1: AD HOC PRINTING REQUIREMENT

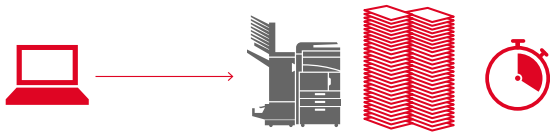
Company A holds a monthly meeting. There are over 50 attendees from each department at one meeting. All hand-outs for the meeting are printed by an MFP, which is located in the Sales Department. Unfortunately, sales people are very busy towards the end of the month. They need to print a lot of documents for their customers.

It takes 20 min. to complete 50 jobs. During high-volume printing, other employees cannot print. In such cases, they have to wait until finishing the job. As a result, overall work efficiency is affected.

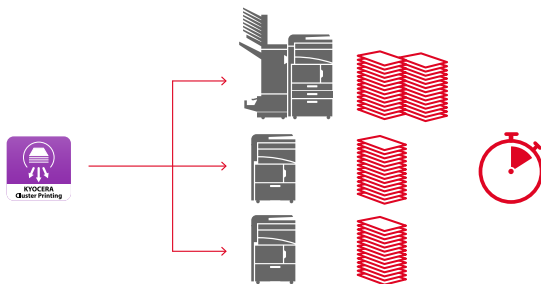
SOLUTION TO IMPROVE WORK EFFICIENCY

- > Shorter waiting time for large print jobs
- > Increased efficiency for device usage

It takes you about 20 min. to complete the job of 50 copies for 20 page document on a 50ppm MFP.



Using KYOCERA Cluster Printing with one 50ppm MFP and two small printers, the job will be distributed among the three devices and completed in about 10 min.



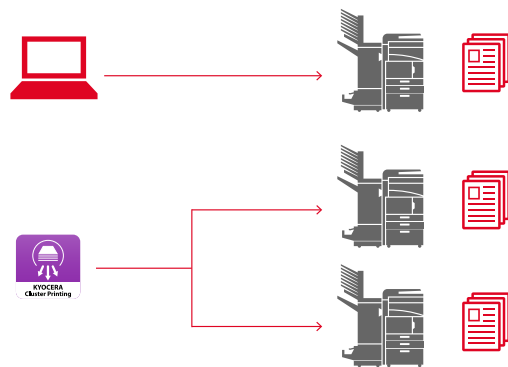
CHALLENGE 2: REALISE HIGH-VOLUME PRINTING AT A LOW COST

Company B obtained a 100ppm MFP 5 years ago for monthly high-volume printing. They are considering to replace it with a high-speed MFP. However, the investment required can be high. The company would like to use their existing devices efficiently to reduce cost.

SOLUTION FOR COST REDUCTION

> Achieve high speed printing with your existing devices

You don't have to use high speed devices for occasional / seasonal high-volume print. Avoid additional hardware investment, by leveraging your existing devices together with KYOCERA Cluster Printing.



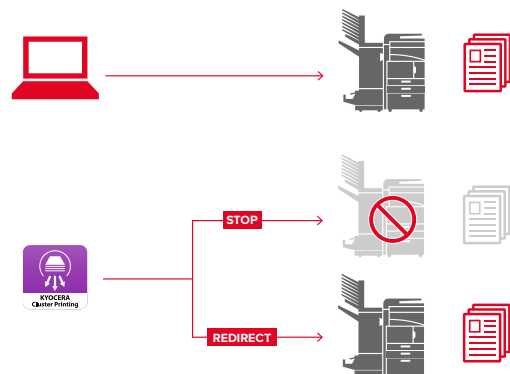
CHALLENGE 3: REDIRECT PRINT JOBS IN CASE OF ERRORS

In hospital C, pharmacists print prescriptions every day. They would like to redirect the jobs in case there is an error, so that their patients do not have to wait so long.

SOLUTION FOR IMPROVED PRODUCTIVITY

> Error Handling

Send the remaining pages to a back-up device, in case of an error on one machine, to reduce the waiting time.



SPECIFICATIONS

FEATURE	BASIC	PROFESSIONAL
Number of Supported Devices	2	Up to 4
Copy Splitting	Y	Y
Page Splitting	N	Y
Split Print Job Based on Device PPM	N	Y
Cover Page for Split Jobs	N	Y
Redirecting Job when One Device is Offline	N	Y

SUPPORTED MODELS

A3model MFP

TASKalfa 6052ci / 5052ci / 4052ci / 3252ci / 2552ci
 TASKalfa 6002i / 5002i/4002i
 TASKalfa 8052ci / 7052ci
 TASKalfa 3511i / 3011i
 TASKalfa 8002i / 7002i
 TASKalfa 3051ci / 3551ci / 4551ci / 5551ci
 TASKalfa 6551ci / 7551ci
 TASKalfa 3501i / 4501i / 5501i
 TASKalfa 6501i / 8001i
 TASKalfa 3010i / 3510i
 TASKalfa 2551ci
 ECOSYS M4125idn / M4132idn
 ECOSYS M8124cidn / M8130cidn

A3model Printer

ECOSYS P8060cdn

A4model MFP

TASKalfa 306ci / 350ci / 356ci / 406ci
 ECOSYS M6030cdn / M6530cdn / M6035cidn
 ECOSYS M6535cidn
 ECOSYS M3040dn / M3540dn / M3040idn /
 M3540idn / M3550idn / M3560idn

A4model Printer

ECOSYS P6130cdn / P6035cdn / P7040cdn
 ECOSYS P3060dn
 ECOSYS P3055dn / P3050dn / P3045dn

SUPPORTED OPERATING SYSTEMS

OS: Windows 7, Windows 8, Windows 8.1, Windows 10,
 Windows 10 Anniversary Update

Note: KCP does not support client-server environment.

*Windows is a registered trademark of Microsoft Corporation.

*All other trademarks are the property of their respective owners.

SUPPORTED LANGUAGES

English, French, German, Italian, Japanese, Korean,
 Portuguese, Spanish, Simplified Chinese, Traditional Chinese

SYSTEM REQUIREMENTS

RAM: 4Gbytes or higher

HDD: 4GB or more empty space on system disk

SSD is recommended for better performance

Internal storage (HDD, SSD, RAM disk) is required

FOR MORE INFORMATION ABOUT KYOCERA CLUSTER PRINTING PLEASE VISIT
www.kyoceradocumentsolutions.eu, or call us at +31(0)20-654-0000

KYOCERA Document Solutions Europe B.V.

Bloemlaan 4, 2132 NP Hoofddorp, The Netherlands
 Tel: +31(0)20-654-0000, Fax: +31(0)20-653-1256
 Email: info@deu.kyocera.com